



# The Effect of Human Blood and Platelet-Rich Fibrin on the Surface Microhardness of Hydraulic Calcium Silicate-Based Cements

Noushin Shokouhinejad<sup>1,2</sup>, Pourya Hosseini<sup>3\*</sup>, Hasan Razmi<sup>2</sup>

1. Dental Research Center, Dentistry Research Institute, Tehran University of Medical Sciences, Tehran, Iran

2. Department of Endodontics, School of Dentistry, Tehran University of Medical Sciences, Tehran, Iran

3. Department of Orthodontics, School of Dentistry, Khorasgan Branch, Islamic Azad University, Isfahan, Iran

Article Info	ABSTRACT
<p><b>Article type:</b> Original Article</p>	<p><b>Objectives:</b> This study aimed to compare the effect of human blood and platelet-rich fibrin (PRF) on the surface microhardness of hydraulic calcium silicate-based cements (OrthoMTA and RetroMTA).</p>
<p><b>Article History:</b> Received: 20 Oct 2023 Accepted: 21 Apr 2024 Published: 02 Nov 2024</p>	<p><b>Materials and Methods:</b> Two types of mineral trioxide aggregate, OrthoMTA and RetroMTA, were mixed and placed into cylindrical molds. The lower surfaces of all cements were exposed to saline. The upper surfaces of cements were exposed to human blood, PRF, or phosphate buffer saline (PBS). After storage for 7 days in fully saturated humidity at 37°C, the microhardness of cement surface exposed to blood, PRF, or PBS was measured using the Vickers microhardness test. The data were analyzed using two-way analysis of variance and post hoc Tamhane's T2 test. The significance level was set at <math>P &lt; 0.05</math>.</p>
<p><b>* Corresponding author:</b> Department of Orthodontics, School of Dentistry, Khorasgan Branch, Islamic Azad University, Isfahan, Iran  Email: <a href="mailto:Pourya.hosseini.m@gmail.com">Pourya.hosseini.m@gmail.com</a></p>	<p><b>Results:</b> Exposure to blood and PRF significantly decreased the surface microhardness of OrthoMTA and RetroMTA. The microhardness of PBS-contacted cements was significantly higher than that of blood or PRF groups (<math>P &lt; 0.001</math>). The microhardness values for OrthoMTA exposed to PRF were significantly higher than the blood group (<math>P = 0.020</math>). There were no significant differences between RetroMTA contacted with blood or PRF groups (<math>P = 0.985</math>). When exposed to blood or PBS, RetroMTA had a significantly higher microhardness than OrthoMTA (<math>P &lt; 0.001</math> for blood, <math>P = 0.002</math> for PBS).</p> <p><b>Conclusion:</b> Exposure to blood or PRF decreased the surface microhardness of both cements. Blood-contaminated RetroMTA showed significantly higher surface microhardness than OrthoMTA contacted with blood. No significant difference was found between PRF-contacted OrthoMTA and RetroMTA.</p> <p><b>Keywords:</b> Blood; Hardness; Mineral trioxide aggregate; Platelet-rich fibrin</p>
<p>➤ <b>Cite this article as:</b> Shokouhinejad N, Hosseini P, Razmi H. The Effect of Human Blood and Platelet-Rich Fibrin on the Surface Microhardness of Hydraulic Calcium Silicate-Based Cements. <i>Front Dent.</i> 2024;21:41.</p>	

## INTRODUCTION

Endodontic management of necrotic immature permanent teeth is a challenging procedure [1]. Regenerative endodontic treatment (RET) has been recently introduced to promote root development [2] and ideally allow for regeneration of dentin-pulp complex [3,4] in necrotic immature teeth. RET involves disinfection of the root canal system, followed by the placement of a scaffold, which is then

sealed with a hydraulic calcium silicate-based cement (HCSC), such as mineral trioxide aggregate (MTA) [5,6]. After disinfection of the root canal system bleeding is stimulated periapically to promote the formation of a blood clot as a scaffold within the root canal. Recently, other scaffold alternatives have been proposed and examined in RET. Autologous platelets concentrates such as platelet-rich fibrin (PRF), which contains essential growth

factors that promote the proliferation and differentiation of human dental pulp cells [7] as well as the osteo- and odontogenic differentiation of the stem cells of the apical papilla (SCAPs) [8]. PRF has shown promising outcomes when used in regenerative endodontics (RET) [9,10].

After the scaffold is introduced to disinfected root canal it should be sealed coronally by the placement of a HCSC. Following the introduction of mineral trioxide aggregate (MTA) to the field of endodontics in 1993, the search for materials demonstrating properties similar to MTA but without its disadvantages such as handling difficulties, long setting time, and the potential for tooth discoloration has led to the development of other HCSCs [11]. Several investigations have shown the unfavorable discoloration of tooth structure induced by some types of HCSCs [12,13]. The composition of hydrophilic calcium silicate-based cements (HCSCs) plays a crucial role in their potential for discoloration. Bismuth oxide (BO) has been identified as a significant factor contributing to tooth discoloration in some HCSC formulations. Research has demonstrated that materials that do not contain BO exhibit a significantly lower discoloration potential compared to materials containing BO [14,15]. OrthoMTA and RetroMTA (BioMTA, Seoul, Korea) have been formulated for clinical applications similar to those of ProRoot MTA. OrthoMTA consists of tricalcium silicate, dicalcium silicate, tricalcium aluminate, tetracalcium aluminoferrite, free calcium oxide, and bismuth oxide [16]. However, RetroMTA is composed of calcium carbonate, silicon dioxide, aluminum oxide, and calcium zirconia complex. Fewer heavy metal components have been shown in OrthoMTA compared to ProRoot MTA [17]. RetroMTA has the advantage of less tooth discoloration [14]. Bismuth oxide (BO) in the composition of some HCSCs such as OrthoMTA has been recognized as one of the main causative factors for tooth discoloration. Destabilization of BO by strong oxidizing agents, amino acids of the dentin collagen, or exposure to light irradiation in an oxygen-free environment have been suggested as reasons for color

instability of HCSCs containing BO [18-20]. Therefore, attempts to develop materials with a lower potential for tooth discoloration and better color stability have led to the introduction of HCSCs with alternative radiopacifiers such as zirconium oxide [13,14]. Furthermore, the zirconia complex in RetroMTA contributes to its shorter setting time [21]. In some randomized controlled trials, it has been shown that OrthoMTA and RetroMTA were comparable to ProRoot MTA and had favorable clinical and radiographic results when used for vital pulp therapy in primary and permanent teeth [22,23].

In RET, the scaffold may interact with HCSC and alter its physicochemical properties [11]. Many *in vitro* studies have evaluated the effect of blood on HCSCs and shown the detrimental effect of blood on the physical properties of these materials [24-26]. However, it has been shown that the extent and degree of physicochemical and microstructural alteration caused by blood contamination were not similar in HCSCs with different compositions [25-27]. Furthermore, the color stability of HCSCs may be influenced by exposure to blood. Several studies have revealed the exacerbation of tooth discoloration induced by HCSCs when they are applied in the presence of blood [12,13,28]. Microhardness tests can be used for the assessment of the quality and progress of the hydration process during the setting reaction of HCSCs, as well as the evaluation of the microstructural gradient of HCSCs [29].

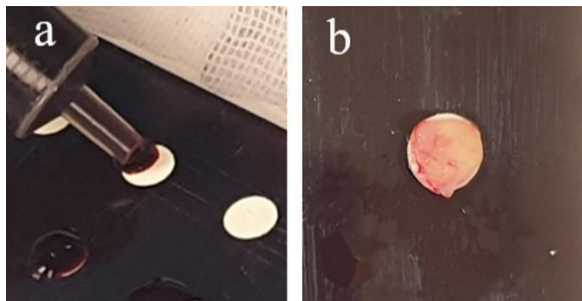
To the best of our knowledge, there is not enough information available about the possible interaction between HCSCs and autologous PRF. Therefore, this study aimed to compare the effect of human blood and PRF on the surface microhardness of OrthoMTA and RetroMTA which relatively differ in the constitution.

## MATERIALS AND METHODS

### *Preparation of samples*

Cylindrical molds made of polymethyl methacrylate (Plexiglass, Cho Chen Industry Co. Ltd., Tainan City, Taiwan), with a height of 4 mm and an internal diameter of 6 mm (as per ASTM E384 standards), were produced using

computerized numerical control laser cutting (Laser ProI, GCC, New Taipei City, Taiwan). The molds were then positioned on a glass slab. OrthoMTA and RetroMTA cements (BioMTA, Seoul, Korea) were prepared according to the manufacturer's instructions and packed into the molds. The upper and lower surfaces of samples were identified by carving letters "U" and "L" on the mold respectively. The MTA was gently packed with an endodontic plugger. All of the procedures including delivering the MTA into the molds and packing them were performed by the same operator. After filling the molds, the lower surfaces of all samples were exposed to saline-soaked cotton gauze. The upper surfaces of OrthoMTA and RetroMTA were exposed to human blood, PRF, or phosphate buffer saline (PBS) as the control group. Therefore, six groups (n=10 for each group) were assessed. Each specimen was exposed to 0.1 mL of blood or PBS. In the PRF group, it was attempted to cover the top surface of each specimen by a piece of PRF (Fig 1).



**Fig 1.** RetroMTA exposed to blood (a) or PRF (b)

The whole fresh human blood was collected from a healthy consented volunteer. This study was approved by the Ethics Committee of Tehran University of Medical Sciences (Ethics code: IR.TUMS.DENTISTRY.REC.1399.180). To prepare PRF, 20 mL of fresh human blood was placed into a test tube without the addition of anticoagulants and immediately centrifuged (PRF Centrifuge DUO Quattro, Nice, France) at 1300 rpm for 8 minutes. To eliminate the exudates, the PRF clot was separated from the layers of platelet-rich plasma and red blood cells and then compressed in a compression box.

The specimens of each group were stored in

separate plastic containers. To simulate physiological conditions, the containers were kept in an incubator (Kavooshmega, Iran) in fully saturated humidity at 37°C for 7 days.

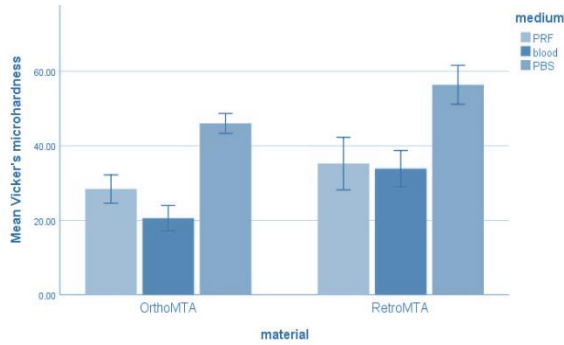
#### **Vickers microhardness test**

Both upper and lower surfaces of the sample were polished with consecutive use of wet and dry silicon carbide sandpapers (600, 1000, 1500, 2000, 3000, and 5000grit) to obtain a smooth polished surface allowing easy observation of indentation. After that, the microhardness of surfaces exposed to blood, PRF, or PBS was evaluated using a Vickers tester (Bareiss Prüftechnologie GmbH, Oberdischingen, Germany) equipped with a pyramid-shaped diamond indenter. A load of 300g was applied for 10 seconds, with the angle between the opposing faces of the diamond indenter set at 136°. Three indentations were made on the polished surface of each sample at different locations. The microhardness value for each specimen was determined by averaging the results from the three indentations. The Vickers microhardness value was calculated using the following formula: Vickers hardness number =  $1.854 \times (F/d^2)$ , where F represents the load in kilogram-force and d is the mean of the two diagonals created by the indenter, measured in millimeters using the V-test II basic Vickers (Bareiss, Germany). The V-Test II basic Vickers tester applies a diamond indenter creating a diamond- shape indentation. This system also has a built-in digital microscope capturing high-resolution images of both diagonals of the indentation. Evaluation Software Hardsoft with Dongle receives the images and uses algorithms to extract lengths of the two diagonals. The software finally calculates the microhardness value using the Vickers microhardness formula. The data were analyzed with two-way analysis of variance and post hoc Tamhane's T2 test using SPSS software (SPSS Inc, Chicago, IL). Significance level was set at  $P < 0.05$ .

## **RESULTS**

The mean and standard deviation (SD) of surface microhardness values in the six groups are shown in Figure 2. Two-way analysis of variance revealed that the interaction

between independent variables (type of material: OrthoMTA or RetroMTA; and type of medium: blood, PRF, or PBS) was not statistically significant ( $P=0.396$ ). Groups showed statistically significant differences regarding the type of material and the type of medium (both  $P<0.001$ ).



**Fig 2.** The mean and standard deviation of the surface microhardness of the groups

The results showed that exposure to blood and PRF significantly decreased the surface microhardness of OrthoMTA and RetroMTA. Microhardness of PBS-contacted cements was significantly higher than that of blood or PRF groups ( $P<0.001$ ). The microhardness values for OrthoMTA exposed to PRF were significantly higher than the blood group ( $P=0.020$ ). There were no significant differences between RetroMTA contacted with blood or PRF groups ( $P=0.985$ ). Regarding the type of material, the findings of this study showed that the surface microhardness of RetroMTA and OrthoMTA did not differ significantly in PRF groups ( $P=0.106$ ). However, in samples contacting blood or PBS, RetroMTA had a significantly higher microhardness than OrthoMTA ( $P<0.001$  for blood,  $P=0.002$  for PBS).

## DISCUSSION

In the present study, the Vickers hardness test was used to assess the effect of exposure to human blood and PRF on the surface microhardness of two types of HCSCs. The microhardness of MTA is affected by various factors, including setting conditions, the thickness of the material, condensation pressure, pH, and

acid etching of the material [30].

In the process of RET, one surface of bioceramic material is in contact with blood or platelet concentrates as scaffold, and moist cotton is placed on the other surface to provide the humidity required for the setting of cement. So, we used a two-sided contact system to simulate this clinical condition. Phosphate-buffered saline (PBS) serves as a simulated tissue fluid that replicates clinical conditions in laboratory studies and was considered as the control group in the current research. [31].

In some clinical situations, HCSCs come into contact with blood. This study showed that regardless of the HCSC, blood and PRF groups exhibited reduced microhardness compared to PBS groups. Although no previous study has investigated the effect of PRF on the physical properties of HCSCs, the findings of the current study are in agreement with those of the previous study which showed the detrimental effect of blood on the surface hardness and crystalline structures of RetroMTA and OrthoMTA [25]. Furthermore, it has been revealed that the physical properties of unset HCSCs are compromised when they expose to blood [24,32,33]. Blood contamination adversely alters the microstructure and hydration behavior of HCSCs [24,33] which might be the main reason for the impairment of the physical properties of these materials. In addition, it has been shown that when set in fetal bovine serum (FBS), The surface of MTA exhibited a homogeneous distribution of chemicals and a relatively smooth globular appearance. [34] indicating disruption of the hydration process, which might explain insufficient hardness of MTA when exposed to FBS [35]. Blood plasma contains the cells and proteins that can adsorb to HCSCs [36], especially when the cements are fresh or quite unset, which might retard HCSCs hydration process by blocking the pores within the cements. Reduced water concentration induced by blood contamination during the setting of HCSCs might also prevent the hydration process of HCSCs [25,36]. PRF contains platelets and leukocytes (LPRF) as well as several proteins that might play similar a role to blood in the impairment of hydration behavior of HCSCs resulting in



decreased surface microhardness.

In the present study, RetroMTA exposed to blood showed significantly higher surface microhardness than blood contacted OrthoMTA. This finding might be attributed to the shorter initial setting time of RetroMTA. Previous studies also showed that HCSCs with reduced setting time and those mixed with antiwashout gel were not adversely affected by exposure to FBS compared to cements with long setting time [35,37]. It has been suggested that surface solidification of fast-setting HSCCs might result in a reduced amount of exposure to blood [25]. However, in the present study, there was no significant difference between the microhardness of RetroMTA and OrthoMTA when exposed to PRF.

Considering the higher surface microhardness of RetroMTA in contact with blood, it might be suggested that blood clot within the root canal formed by stimulation of the periapical tissues in RET is better to be sealed with RetroMTA. In this study, the effect of PRF or blood on the setting reaction of MTA was considered. Therefore, the microhardness of the exposed surface of the material to blood or PRF was investigated. Other properties of blood- or PRF-exposed MTA such as dislocation resistance under the possible load applied for filling the access cavity might be impaired. Regarding the probable alterations in the other surface of materials which is not in contact with blood or PRF in endodontic regeneration, it is better to assess the effect of clinical load or pressure on the other surface that is not exposed to PRF or blood using push-out bond strength test.

Furthermore, as the role of HCSCs especially those that contain BO in tooth discoloration has been revealed by several studies, RetroMTA which contains zirconia complex as the radiopacifier in its constitution is a more suitable material compared to BO-containing OrthoMTA, especially in the esthetic area. Although this study showed no significant difference between the surface microhardness of OrthoMTA and RetroMTA when coming into contact with PRF, in order to reduce tooth

discoloration, RetroMTA suggests to be applied on the top of PRF. It is worth mentioning that in clinical situations, several factors play important role in the final outcome of RET. Therefore, further clinical trials are needed to confirm the results of this study.

## CONCLUSION

Under the conditions of this in vitro study, it could be concluded that exposure to blood or PRF significantly decreased the surface microhardness of both cements. Blood contaminated RetroMTA showed significantly higher surface microhardness than OrthoMTA contacted with blood. No significant difference was found between PRF contacted OrthoMTA and RetroMTA.

## ACKNOWLEDGMENTS

This study was part of a D.D.S. thesis supported by Tehran University of Medical Sciences and supported by Tehran University of Medical Sciences (grant number. 54851). Authors would like to thank Dr. MJ. Kharrazifard for performing statistical analysis.

## CONFLICT OF INTEREST STATEMENT

None declared.

## REFERENCES

1. Nosrat A, Homayounfar N, Oloomi K. Drawbacks and unfavorable outcomes of regenerative endodontic treatments of necrotic immature teeth: a literature review and report of a case. *J Endod.* 2012 Oct;38(10):1428-34.
2. Galler KM. Clinical procedures for revitalization: current knowledge and considerations. *Int Endod J.* 2016 Oct;49(10):926-36.
3. Hargreaves KM, Diogenes A, Teixeira FB. Treatment options: biological basis of regenerative endodontic procedures. *J Endod.* 2013 Mar;39(3 Suppl):S30-43.
4. Nosrat A, Seifi A, Asgary S. Regenerative endodontic treatment (revascularization) for necrotic immature permanent molars: a review and report of two cases with a new biomaterial. *J Endod.* 2011 Apr;37(4):562-7.
5. Galler KM, Krastl G, Simon S, Van Gorp G, Meschi N, Vahedi B, Lambrechts P. European Society of Endodontology position statement: Revitalization procedures. *Int Endod J.* 2016 Aug;49(8):717-23.

6. Lee BN, Moon JW, Chang HS, Hwang IN, Oh WM, Hwang YC. A review of the regenerative endodontic treatment procedure. *Restor Dent Endod.* 2015 Aug;40(3):179-87.
7. Huang FM, Yang SF, Zhao JH, Chang YC. Platelet-rich fibrin increases proliferation and differentiation of human dental pulp cells. *J Endod.* 2010 Oct;36(10):1628-32.
8. Bi J, Liu Y, Liu XM, Lei S, Chen X. Platelet-rich Fibrin Improves the Osteo-/Odontogenic Differentiation of Stem Cells from Apical Papilla via the Extracellular Signal-regulated Protein Kinase Signaling Pathway. *J Endod.* 2020 May;46(5):648-654.
9. Rizk HM, Salah Al-Deen MS, Emam AA. Pulp Revascularization/Revitalization of Bilateral Upper Necrotic Immature Permanent Central Incisors with Blood Clot vs Platelet-rich Fibrin Scaffolds-A Split-mouth Double-blind Randomized Controlled Trial. *Int J Clin Pediatr Dent.* 2020 Jul-Aug;13(4):337-343.
10. Meschi N, EzEldeen M, Garcia AET, Lahoud P, Van Gorp G, Coucke W, Jacobs R, Vandamme K, Teughels W, Lambrechts P. Regenerative Endodontic Procedure of Immature Permanent Teeth with Leukocyte and Platelet-rich Fibrin: A Multicenter Controlled Clinical Trial. *J Endod.* 2021 Nov;47(11):1729-1750.
11. Shokouhinejad N. Endodontics in the era of hydraulic calcium silicate cements: a special notice to tooth discoloration following regenerative endodontic treatment. *Endo EPT.* 2020 ;14(3):187-95.
12. Felman D, Parashos P. Coronal tooth discoloration and white mineral trioxide aggregate. *J Endod.* 2013 Apr;39(4):484-7.
13. Shokouhinejad N, Nekoofar MH, Pirmoazen S, Shamshiri AR, Dummer PM. Evaluation and Comparison of Occurrence of Tooth Discoloration after the Application of Various Calcium Silicate-based Cements: An Ex Vivo Study. *J Endod.* 2016 Jan;42(1):140-4.
14. Kang SH, Shin YS, Lee HS, Kim SO, Shin Y, Jung IY, Song JS. Color changes of teeth after treatment with various mineral trioxide aggregate-based materials: an ex vivo study. *J Endod.* 2015 May;41(5):737-41.
15. Marconyak LJ Jr, Kirkpatrick TC, Roberts HW, Roberts MD, Aparicio A, Himel VT, Sabey KA. A Comparison of Coronal Tooth Discoloration Elicited by Various Endodontic Reparative Materials. *J Endod.* 2016 Mar;42(3):470-3.
16. Chang SW, Baek SH, Yang HC, Seo DG, Hong ST, Han SH, Lee Y, Gu Y, Kwon HB, Lee W, Bae KS, Kum KY. Heavy metal analysis of ortho MTA and ProRoot MTA. *J Endod.* 2011 Dec;37(12):1673-6.
17. Kum KY, Zhu Q, Safavi K, Gu Y, Bae KS, Chang SW. Analysis of six heavy metals in Ortho mineral trioxide aggregate and ProRoot mineral trioxide aggregate by inductively coupled plasma-optical emission spectrometry. *Aust Endod J.* 2013 Dec;39(3):126-30.
18. Camilleri J. Color stability of white mineral trioxide aggregate in contact with hypochlorite solution. *J Endod.* 2014 Mar;40(3):436-40.
19. Marciano MA, Costa RM, Camilleri J, Mondelli RF, Guimarães BM, Duarte MA. Assessment of color stability of white mineral trioxide aggregate angelus and bismuth oxide in contact with tooth structure. *J Endod.* 2014 Aug;40(8):1235-40.
20. Vallés M, Mercadé M, Duran-Sindreu F, Bourdelande JL, Roig M. Influence of light and oxygen on the color stability of five calcium silicate-based materials. *J Endod.* 2013 Apr;39(4):525-8.
21. Li Q, Deacon AD, Coleman NJ. The impact of zirconium oxide nanoparticles on the hydration chemistry and biocompatibility of white Portland cement. *Dent Mater J.* 2013;32(5):808-15.
22. Kang CM, Sun Y, Song JS, Pang NS, Roh BD, Lee CY, Shin Y. A randomized controlled trial of various MTA materials for partial pulpotomy in permanent teeth. *J Dent.* 2017 May;60:8-13.
23. Kang CM, Kim SH, Shin Y, Lee HS, Lee JH, Kim GT, Song JS. A randomized controlled trial of ProRoot MTA, OrthoMTA and RetroMTA for pulpotomy in primary molars. *Oral Dis.* 2015 Sep;21(6):785-91
24. Nekoofar MH, Stone DF, Dummer PM. The effect of blood contamination on the compressive strength and surface microstructure of mineral trioxide aggregate. *Int Endod J.* 2010 Sep;43(9):782-91.
25. Song M, Yue W, Kim S, Kim W, Kim Y, Kim JW, Kim E. The effect of human blood on the setting and surface micro-hardness of calcium silicate cements. *Clin Oral Investig.* 2016 Nov;20(8):1997-2005.
26. Alipour M, Faraji Gavvani L, Ghasemi N. Push-out bond strength of the calcium silicate-based endodontic cements in the presence of blood: A systematic review and meta-analysis of in vitro studies. *Clin Exp Dent Res.* 2022 Apr;8(2):571-582.
27. Akcay H, Arslan H, Akcay M, Mese M, Sahin NN. Evaluation of the bond strength of root-end placed mineral trioxide aggregate and Biodentine in the absence/presence of blood contamination. *Eur J Dent.* 2016 Jul-Sep;10(3):370-375.
28. Chen SJ, Karabucak B, Steffen JJ, Yu YH, Kohli MR. Spectrophotometric Analysis of Coronal Tooth Discoloration Induced by Tricalcium Silicate Cements in the Presence of Blood. *J Endod.* 2020 Dec;46(12):1913-1919.

29. Lee YL, Lee BS, Lin FH, Yun Lin A, Lan WH, Lin CP. Effects of physiological environments on the hydration behavior of mineral trioxide aggregate. *Biomaterials*. 2004 Feb;25(5):787-93.
30. Parirokh M, Torabinejad M. Mineral trioxide aggregate: a comprehensive literature review--Part I: chemical, physical, and antibacterial properties. *J Endod*. 2010 Jan;36(1):16-27.
31. Shokouhinejad N, Nekoofar MH, Razmi H, Sajadi S, Davies TE, Saghiri MA, Gorjestani H, Dummer PM. Bioactivity of EndoSequence root repair material and bioaggregate. *Int Endod J*. 2012 Dec;45(12):1127-34.
32. Vanderweele RA, Schwartz SA, Beeson TJ. Effect of blood contamination on retention characteristics of MTA when mixed with different liquids. *J Endod*. 2006 May;32(5):421-4.
33. Nekoofar MH, Oloomi K, Sheykhrezae MS, Tabor R, Stone DF, Dummer PM. An evaluation of the effect of blood and human serum on the surface microhardness and surface microstructure of mineral trioxide aggregate. *Int Endod J*. 2010 Oct;43(10):849-58.
34. Tingey MC, Bush P, Levine MS. Analysis of mineral trioxide aggregate surface when set in the presence of fetal bovine serum. *J Endod*. 2008 Jan;34(1):45-9.
35. Kim Y, Kim S, Shin YS, Jung IY, Lee SJ. Failure of setting of mineral trioxide aggregate in the presence of fetal bovine serum and its prevention. *J Endod*. 2012 Apr;38(4):536-40.
36. Gandolfi MG, Iacono F, Agee K, Siboni F, Tay F, Pashley DH, Prati C. Setting time and expansion in different soaking media of experimental accelerated calcium-silicate cements and ProRoot MTA. *Oral Surg Oral Med Oral Pathol Oral Radiol Endod*. 2009 Dec;108(6):e39-45.
37. Walsh RM, Woodmansey KF, Glickman GN, He J. Evaluation of compressive strength of hydraulic silicate-based root-end filling materials. *J Endod*. 2014 Jul;40(7):969-72.